

THE PENDRAGON

Vol. III · Number 4 The Newsletter of the Unadilla Valley Railway Society & Museum · PO Box 791, New Berlin, NY 13411

June 1999

News & Notes

County Supports UVRS

The Unadilla Valley Railway Society received additional recognition in May when the Chenango County Board of Supervisors passed a resolution of support for our efforts to establish a railway museum. The Town of New Berlin passed a similar resolution in February. These actions will help the society when we apply for grants.

Membership Report

Kenneth O. Davis II of Guilford died March 31 while wintering in Florida. His contributions to the society will be greatly missed.

Since March the following new members have come aboard: Robert F. Van Wormer, Morris; Leland C. Yetter, Berkshire; Peter Dix, Sidney; and Gerry K. Schultz, Mayfield.

Total membership now stands at 79.

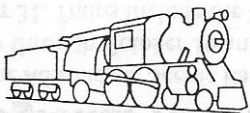
Historic Site Available

We have the opportunity to acquire part of the original UV Yard in New Berlin. The parcel that has become available includes the oil house, pump house, and the remaining stall of the engine house. The parcel can be obtained for about \$20,000. Members wanting to help acquire this property are encouraged to donate whatever they can, marked "Site Acquisition." Donations of \$100, \$50, \$25 or any amount will be gratefully accepted. We hope many will help us take advantage of this one-time opportunity.

Meeting Schedule

Summer meetings of the Unadilla Valley Railway Society will be on July 12, August 2, and September 13 at 7:00 p.m. in the basement of the New Berlin Village Library.

On August 2, Robert Moore of Milford will speak about the D&H explosion that occurred in the Oneonta area in February 1974.



The Pendragon's next scheduled stop at your station is September 1999.

Train Ride Opens in Milford

Grand Opening Celebration Scheduled Saturday, July 10

Culminating 15 years of determination and work by the Leatherstocking Railway Historical Society, the Cooperstown & Charlotte Valley Railroad has begun operating an excursion train between Milford and Cooperstown.

Trains will run every day except Mondays from June 29 through September 6, and will continue to run on weekends and holidays through November 7.

Trains are scheduled to leave Milford at 9:30 a.m., 11:30 a.m., 1:30 p.m., 3:30 p.m., and 5:30 p.m.; and to leave Cooperstown at 10:30 a.m., 12:30 p.m., 2:30 p.m., 4:30 p.m., and 6:30 p.m. Tickets for the 16-mile round trip cost \$8 for adults and \$5 for children.

Riders will occupy three 1927 Pullman commuter-type passenger cars owned by the

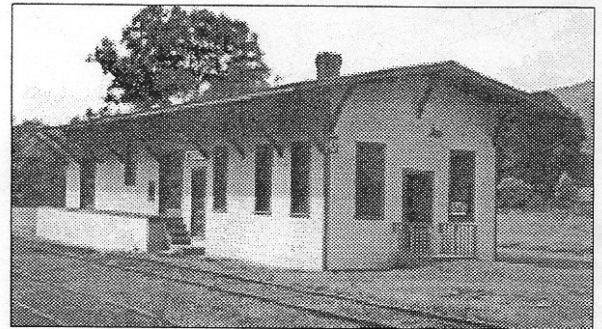


PHOTO COURTESY LRHS

The Milford depot of the C&CV Railroad.

LRHS. The locomotive is a 1948 O&W NW2 1000 hp diesel electric.

The railroad will host a grand opening and 130th anniversary celebration on Saturday, July 10 at the Milford depot on NYS Route 166 just off Otsego County Route 28. There will be special rail exhibits and several guest speakers. Festivities will begin at 10 a.m.

A MESSAGE FROM THE PRESIDENT

Two Down and a World To Go!

This spring has been a busy one. Boy, has it been exciting. Having filed for a legislative initiative (reimbursement funds) from the New York State Legislature, we are also making preparations to file for funds under T.E.A. 21 (federal reimbursement under New York State Department of Transportation supervision). Much work is still needed here.

We were granted a hearing before the New Berlin Town Board and as a result received its support as a sponsor for our railway museum. Not long after, we went before a committee of the Chenango County Board or Supervisors. The result was that the county also agreed to support and sponsor our effort. One other need is to discover or secure registration of historic buildings we seek to obtain. We have so far run into a bunch of dead ends. (Any ideas?)

While our primary site target remains the

New Berlin O. & W. depot, we are hampered by a shortage of funds—\$75,000, anyone? Someone recently told us how I.L. Richer gave away another of its surplus plants as a tax writeoff. Only last week we learned that the remaining U.V. property in New Berlin, the engine house stall and oil house, is now listed for sale at \$25,000 and may be had for \$20,000. This is way down from the \$120,000 its previous owner sought.

On another tack, we are holding a raffle to raise some acquisition funds. A previously autographed first edition copy of Fred Pugh's book *Days Along the Buckwheat and Dandelion* will be given to the owner of the winning \$5 ticket. The drawing will be at the July 12 meeting.

You see, we may not yet have reached our target, but we sure are busy trying to get there.

GEORGE R. WOLFANGLE

Regional Rail Events

■ The Adirondack Scenic Railroad will be running trains daily through October 16 and on weekends through October 31. Trains include the Utica/Old Forge Grand Limited operating between Thendara and Utica, and the Old Forge/Thendara Wilderness Local with stops in Minnehaha and Otter Lake. For information call (315) 724-0700 (Utica) or (315) 369-6290 (Thendara).

■ Reading Railroad Days will be July 2-4 at the Railroad Museum of Pennsylvania in Strasburg. Attractions include oral history presentations, equipment tours, and an operating model railroad. The museum will be open Friday and Saturday 9 a.m. to 7 p.m., and Sunday 11 a.m. to 5 p.m. For information call (717) 687-8628 or e-mail frm@redrose.net.

■ There will be a Steamtown Excursion July 5 from Scranton, PA to celebrate the 25th anniversary of Railfan & Railroad Magazine. The train will depart Steamtown at 8:30 a.m. for a 92-mile round trip and return around 5 p.m. Fare is \$59.95 for adults and \$39.95 for children. Tickets can be ordered with Visa or Mastercard by calling Steamtown at (570) 340-5204.

■ The Black River & Western RR will run a mixed freight train July 16, departing Ringoes, NJ at 10 a.m. Fare is \$20; reservations are required. Tickets are available by calling (908) 782-6622.

RAILWAY HISTORY

August, 1957.

UNADILLA VALLEY RAILWAY COMPANY.
Executive Offices—225 Broadway, New York City.
General Offices—New Berlin, N.Y.

	MIs	August, 1957.	
S	0 Bridgewater	Freight Service only.
	2 River Forks	
	5 Leonardsville	
	9 West Edmeston	
	12 Sweets	
	15 South Edmeston	
	20 New Berlin	
	0 New Berlin	
	7 Edmeston	
	20 New Berlin	
	28 South New Berlin	
	29 Holmesville	
	34 Rockwells Mills	
	36 Mount Upton	
	39 Rockdale	
	42 New Berlin Junction	

Connections.—At Bridgewater—With Lackawanna Railroad.

The ad reproduced above appeared on page 133 in the September 1957 issue of "The Official Guide of the Railways..."

Unadilla Valley Railway Society
PO Box 791
New Berlin, NY 13411

